

Meat Goat Judging

By Judy Kaye

It is a great honor to be asked to write this column following the legendary Terry Burks. Hopefully, my 15 years experience breeding and showing meat goats, in addition to a lifetime of raising various livestock (dairy & beef cattle and registered sheep), will translate to valuable information for readers. I know I look forward to receiving each issue of Pacific Showcase and spend a lot of time poring over the articles and advertisements. This magazine is our vehicle for staying in touch with our industry and each other; and I'm thrilled to be a part of it!

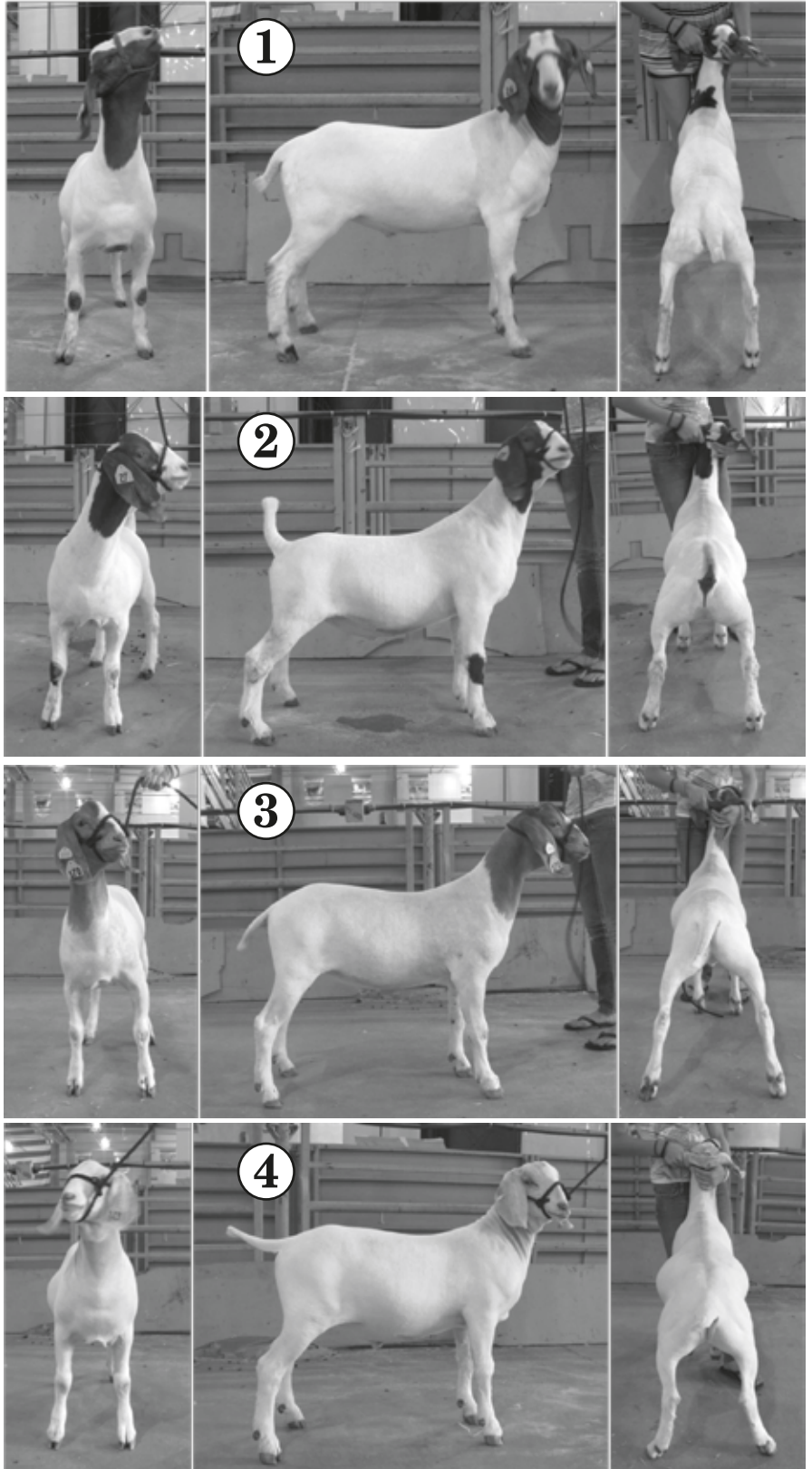
When this idea was first brought to me I panicked: *What could I possibly have to say that others would find valuable?* Then I started brainstorming some ideas with my show team and we were able to come up with lots of themes that could be addressed. If you have a suggestion or idea for a future article, or something you want to know and don't know who to ask, send me an email. If I don't know the answer, I will find someone who does. The more correct information we share the better and stronger the meat goat industry will be.

Meat Goat Judging

Since Spring is Field Day season and Meat Goats are making an appearance in Livestock Judging contests, I decided to provide a Market Goat class for the inaugural article. Here you will find photos of four goats: front, side and rear shots. I have placed the class as I see it and written out the reasons for my placing. You will also see how I would record this class on my judging pad so that I could give oral reasons. This will be quite basic for those of you with experience, but may well be a first look for others who have not made the leap into judging yet. Regardless of your affiliation with 4-H, FFA, Grange or Independent, this is a good basic model to use when viewing a class, no matter the species.

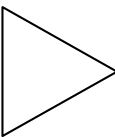
CLASS 1. — MARKET GOATS

Step 1: Evaluate the Class



Step 2: Record your observations on your judging pad

Notepad:

Class 1. Market Goats		Placing: 2-1-4-3
	1 = spot neck 2 = red knee 3 = lemon-head 4 = white	 <i>Distinguishing characteristic of each animal</i>
Opening statement: Start with stoutest, most heavily muscled wether		
TOP PAIR	2 / 1 more extended front end Stoutier made More bone, biggest foot Leveler hip Higher tail set Most muscle More spring of rib	Grant 1 / 2 Longer hip Width of chest Expressive forearm Stronger pasterns
MIDDLE PAIR	1 / 4 Overall length of body & neck Length of hip Width down the top Width of lower leg Stands on better hind legs	
BOTTOM PAIR	4 / 3 More muscle throughout Leveler topline	Grant 3 / 4 Extension through neck Correct set to rear legs Prettier profile
LAST PLACE	3 lacks dimension Frailest made Lightest muscled	

Step 3: Prepare your oral reasons

Reasons:

I placed this class of Market Goats 2-1-4-3. Two comes to the top quite easily as he is by far the heaviest muscled goat in the class. He is more extended in the front and stands on the biggest foot. Two is the levellest out his rump of any wether in the class, with the highest tail set. This red knee goat is thicker down his top and carries that muscle progressively wider into his hind saddle, rump, down through the twist and stifle. I grant that number 1 is wider in the chest floor, shows more expression in his forearm, and has stronger rear pasterns than 2, but there is no getting around the amount of lean product 2 brings to the class.

In my middle pair 1 goes over 4 because 1 most closely follows the type of my first place goat. One is thicker down his top, into his hind saddle, and down into his stifle than 4. The spot-necked goat is more correct on his hind legs than the white goat and is cleaner and more expressive through his chest floor and forearm. I grant that 4 appears to have more inner leg than 1, but that muscle

doesn't carry down into the lower third as powerfully as it does on 1.

The white goat goes over the lemon-head in the bottom pair based on his muscling throughout. I criticize 4 for being extremely short necked with excessive skin, and grant that 3 has a lovely long neck and appealing profile, but 4 is leveler topped and thicker from end-to-end, top-to-bottom. 3 does not exhibit the severe cow-hocks that 4 possesses, regardless 3 goes to the bottom of the class for being the narrowest made, lightest muscled goat in the class which yields the least product.

Ask Judy: send email to wrr@jps.net or post a message on her Facebook page

/WhiteRailRanch.

Judy Kaye, White Rail Ranch

*Do you know Jack?
We know Jack!*



WRR Jack Knife

Sire of these Champions →

Give us a call to get in on these winning results!



2011 Four-time
Division
Champion:
WRR Tina



2011
Western Bonanza
Reserve Supreme:
Peanut



2009
California
State Fair
Reserve
Grand
Champion



2010
Pacific
International
Reserve
Grand
Champion

White Rail Ranch



Purebred Boer Goats and Market Wethers

Chuck & Judy Kaye

559-788-1085 • Cell: (707) 548-1486

22819 Avenue 124, Porterville, CA 93257

Email: wrr@jps.net • Web: www.whiterailranch.com

We proudly feed & recommend
Bar ALE and Sunglo Feeds

